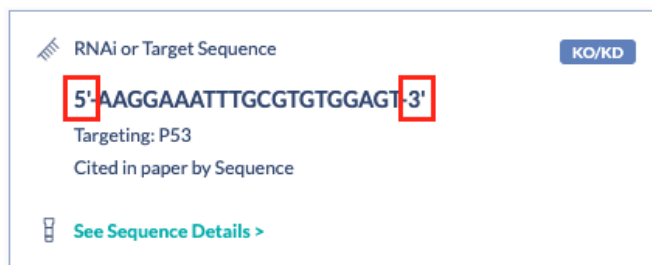


Labeling RNAi sequence directionality

Last Modified on 03/02/2022 6:10 pm EST

Labels for sequence directionality are extracted from the source publication



We trained our machine learning models to read through scientific literature and extract RNAi sequences referenced in figures (see [RNAi sequences](#)). Not all scientific publications include a full product citation with vendor and catalog information for RNAi products used in the research, particularly when reagents are developed in-house. The sequences we've extracted, although powerful for designing your own oligonucleotides, rely on the sequences as the authors have written them. So, some entries indicate the 5' and 3' ends (see *image*) and others do not.

We use cookies on our website to make your browsing experience better. By using the site, you agree to use our cookies. [Learn more](#)

Accept